

# Laparoscopic Urological Surgery Workshop: Laparoscopic Nephrectomy and Robotic Prostatectomy

September 10 - 11

## COURSE DESCRIPTION

This course focuses on laparoscopic approaches for the treatment of benign and malignant urologic diseases and serves as an introduction to robotic radical prostatectomy. The content is designed to address the clinical needs of urologists as well as general surgeons/transplant surgeons. Course participants will learn techniques for laparoscopic and hand-assisted laparoscopic radical nephrectomy and partial nephrectomy, as well as robotic prostatectomy. Both transperitoneal and retroperitoneal laparoscopic approaches to the kidney will be described. Techniques for laparoscopic donor nephrectomy will be included for interested surgeons. Participants will have the opportunity to perform laparoscopic and hand-assisted laparoscopic nephrectomy during the laboratory portion of the course. This course meets the guidelines as established in the *Framework for Post-residency Surgical Education and Training*.

## EDUCATIONAL OBJECTIVES

Upon completion of this course, participants should be able to:

- Discuss the indications and techniques for laparoscopic radical, partial and donor nephrectomy
- Describe the minimally invasive techniques for transperitoneal and retroperitoneal access to the kidney
- Satisfy Level 2 AMA PRA requirements for new skills and procedures training.

- Describe specimen removal and vascular control techniques for laparoscopic renal surgery
- Understand the indications and techniques for laparoscopic/robotic prostatectomy.

## COURSE DIRECTORS

**Kent W. Kercher, MD, FACS**

Chief, Minimal Access Surgery

Co-director, CLASP

Co-director, Carolinas Hernia Center

**Pierce B. Irby, MD, FACS**

McKay Department of Urology

## CMC FACULTY

**Chris Teigland, MD, FACS**

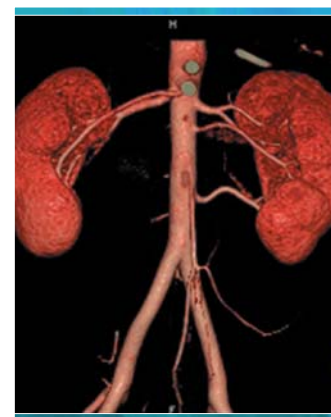
Chair, McKay Department of Urology

## GUEST FACULTY

**Thomas W. Jarrett, MD**

Professor and Chairman of Urology

George Washington University



## PROGRAM

**Day 1 – Main Operating Room (CMC)**

7 a.m. – 4:30 p.m. . . . . Live Case Observations  
(Laparoscopic Nephrectomy and Robotic Prostatectomy)

**Day 2 – Morning Session – CLASP Conference Center**

8:15 a.m. . . . . Breakfast, Registration and Introductions

8:30 a.m. . . . . Didactic Session

Noon . . . . . Lunch

**Day 2 – Afternoon Session – Cannon Research Center**

12:30 p.m. . . . . Hands-on Laboratory

*In addition to the lab, we will have a robot setup in the OR for practice only – no cases.*

3:35 p.m. . . . . Discussion

4:30 p.m. . . . . Evaluations/Certificates

**FEE:** \$250

**CREDIT:** Carolinas HealthCare System designates this educational activity for a maximum 16 *AMA PRA Category 1 Credits™*. Physicians should only claim credit commensurate with the extent of their participation in the activity.